

Columbus - Belmont Battlefield State Park



Overlooking barges on the
Missouri side of the river



Barge terminal and port of
Columbus, KY

"Great River Road"
(Kentucky)





Anchor used by Confederate Army to block the Union gunboats on the river



Chain used by Confederates to block the river

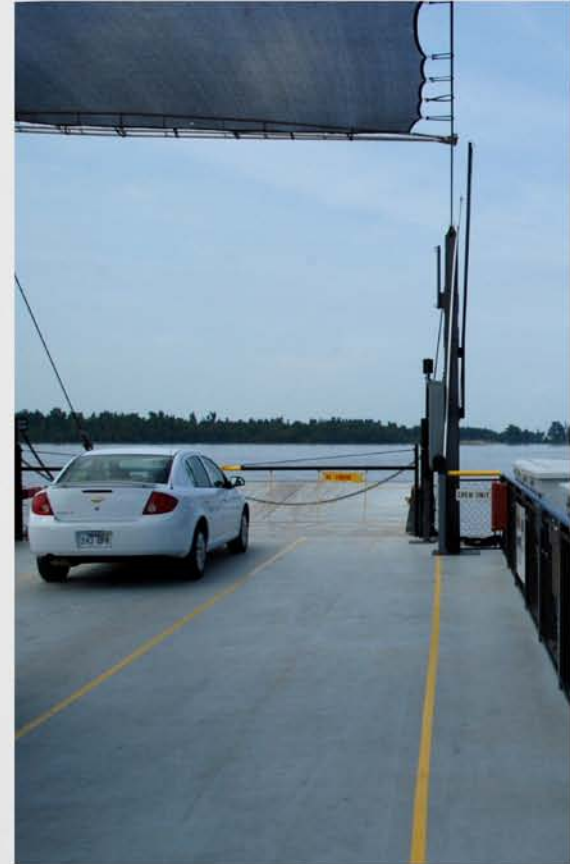


Confederate naval gun at Columbus - Belmont Battlefield

"Great River Road" (Kentucky)



Ferry coming in
to land



Aboard the small ferry



Crossing the Mississippi River by ferry from Hickman, KY to Dorena, MO

"Great River Road"
∞ (Kentucky) ∞



Towboat pushing 35 barges upriver to St Louis



"Great River Road"
∞ (Kentucky) ∞



Site of old Fort
Jefferson



Remains of the Confederate breastworks at Columbus - Belmont Battlefield



Memorial to locomotive engineer "Casey Jones" - Cayce

"Great River Road"
(Kentucky)



Main Street of Hannibal

"Great River Road"
(Missouri)



Old bank building in
Hannibal



Downtown Hannibal



Store where he worked as a boy



Law office of Mark Twain's father



The sign says it all!

"Great River Road"
(Missouri)



Boyhood home of Mark Twain

"Great River Road" (Missouri)



Becky Thatcher's home



Reconstruction of Tom Sawyer's home



Mark Twain and
"Friends"

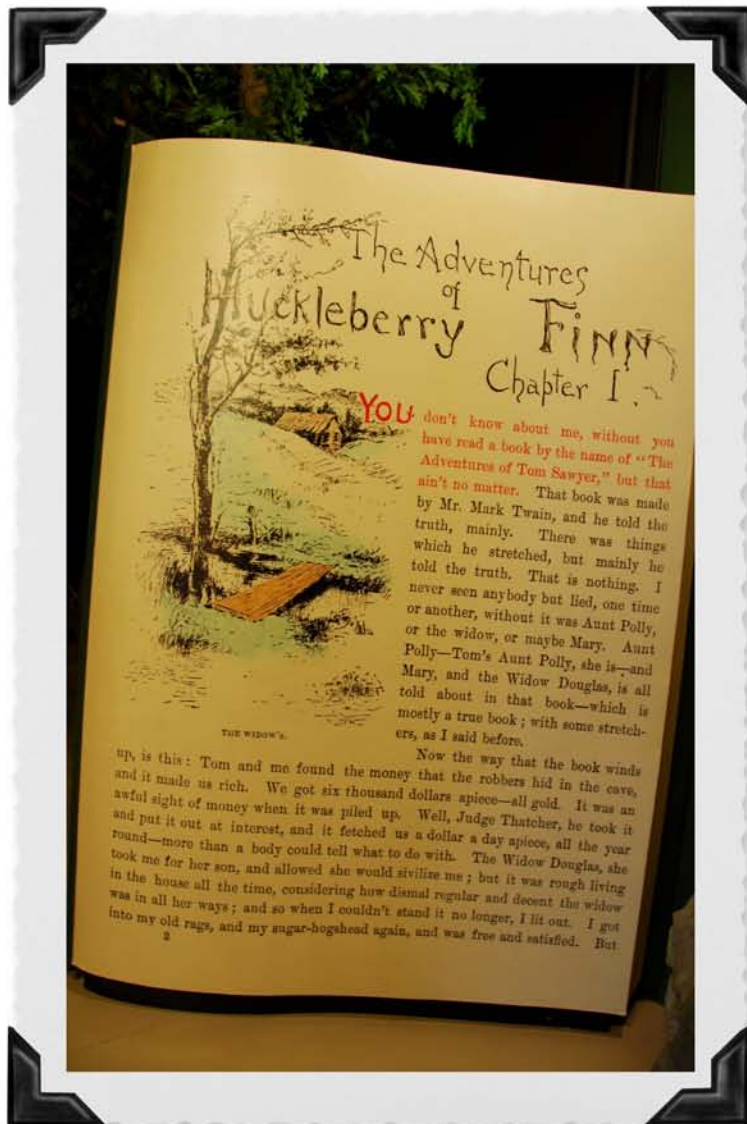


Mark Twain at work on a fictional character

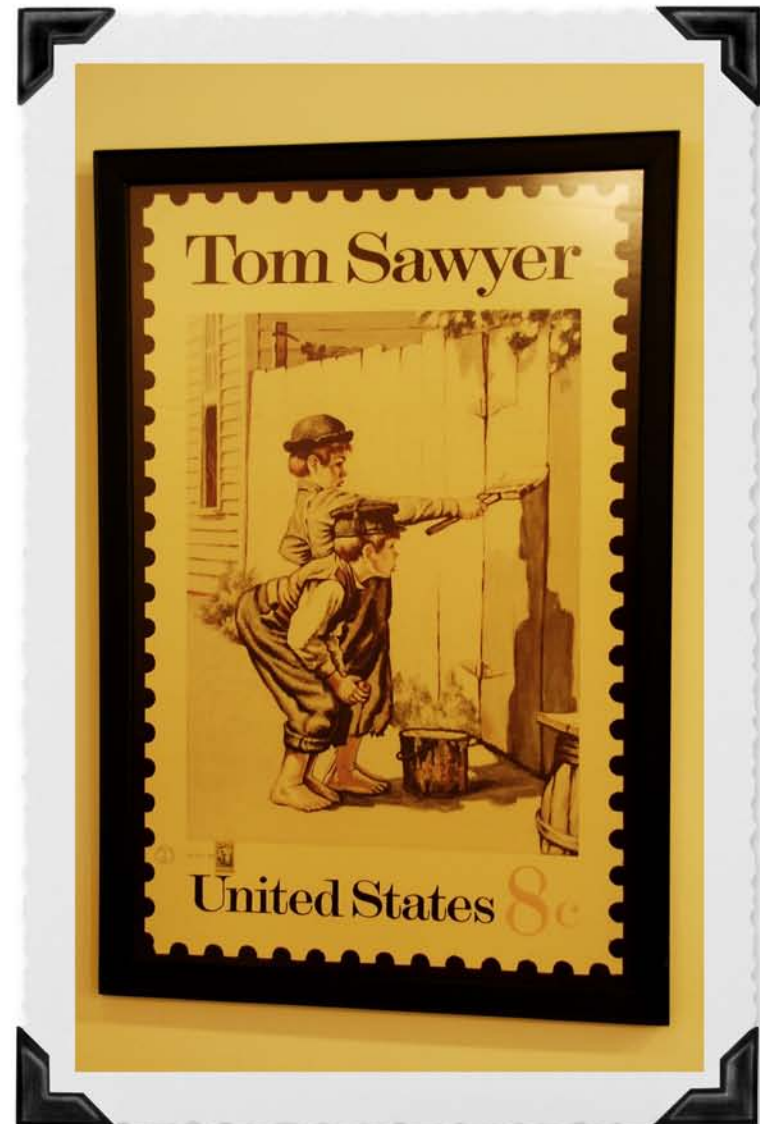


Mark Twain's study

"Great River Road"
(Missouri)

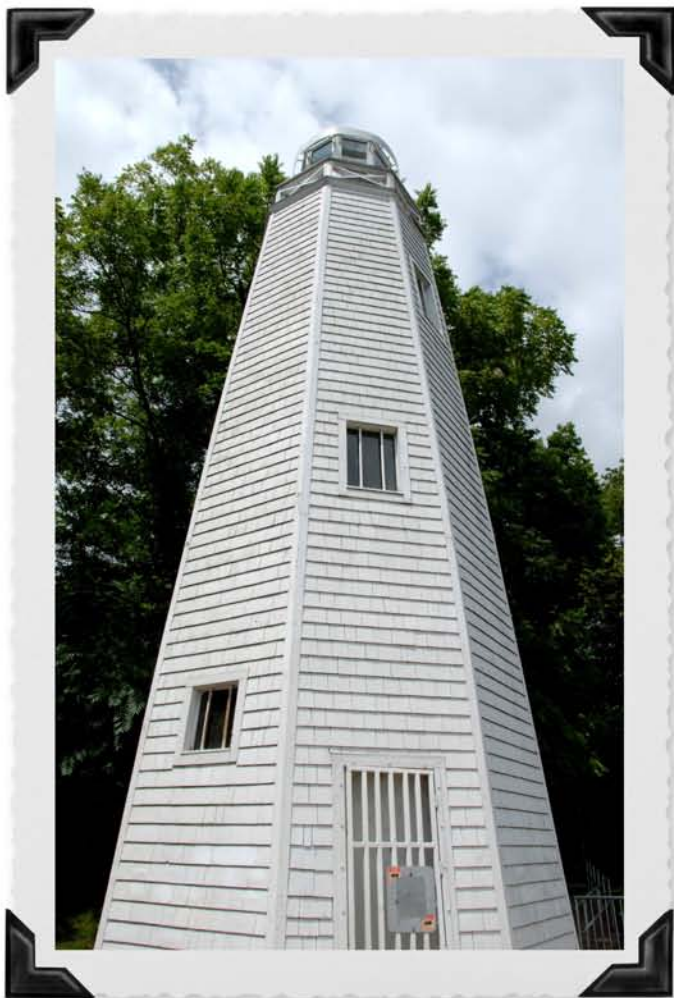


First published edition



US Postage stamp design by artist Norman Rockwell

~"Great River Road" - (Missouri)~



Lighthouse on the bluffs above Hannibal

"Great River Road"
(Missouri)

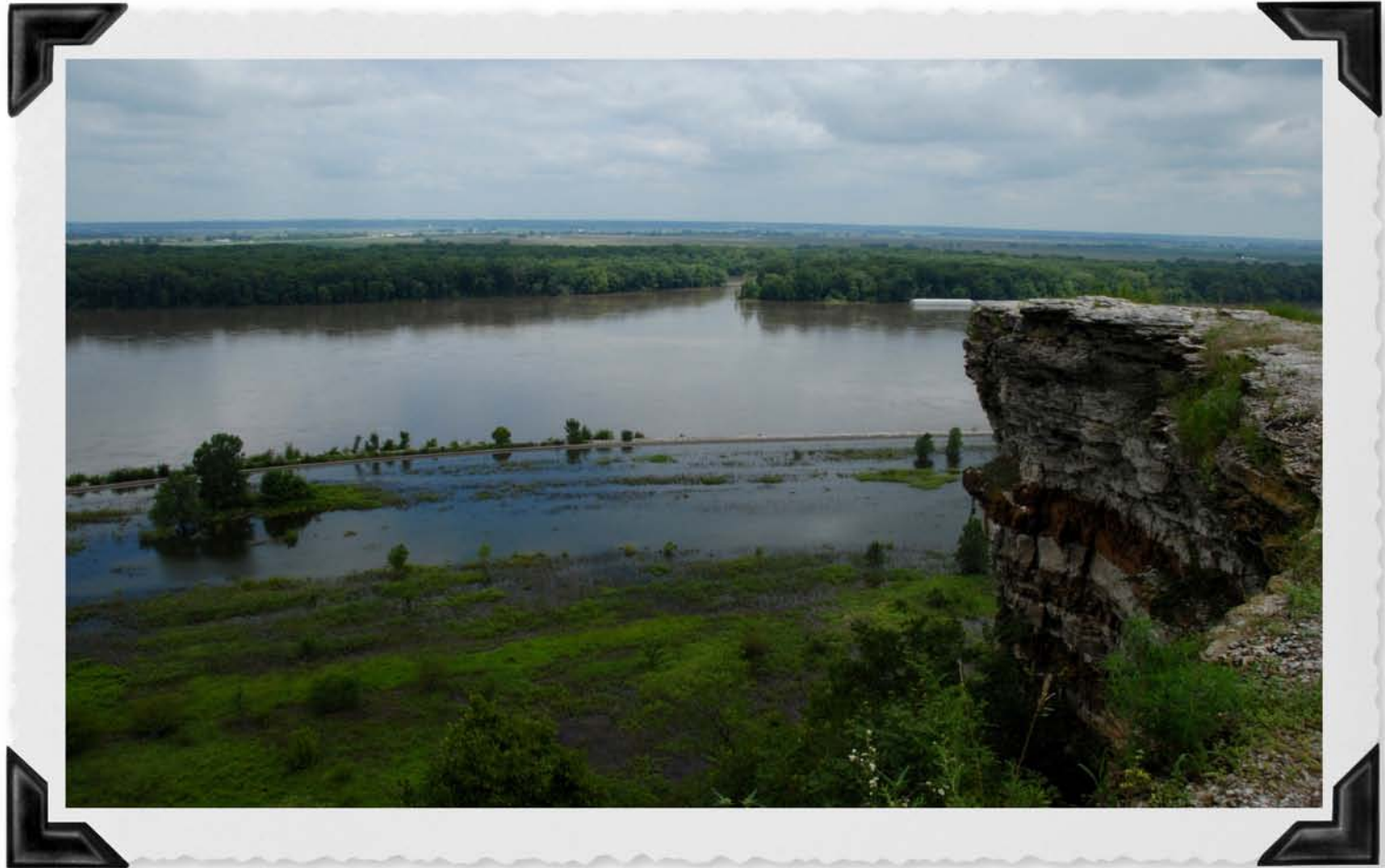


View of Hannibal from the bluffs



Mississippi River below Hannibal

∞ "Great River Road" - (Missouri) ∞



View from "Lover's Leap" near Hannibal



Farmland along the Mississippi River



Antique windmill farm



Old brick storehouse for corn

"Great River Road" (Missouri)



Entering the village of ILASCO



Al's Tavern - a reminder of good times in the village of ILASCO



ILASCO - (Iron,Lime,Alumina,Silica,Calcium,Oxygen)

"Great River Road"
(Missouri)

∞ "Great River Road" - (Missouri) ∞



All that remains of ILASCO



View of the Mississippi River south of Hannibal

"Great River Road" (Missouri)



Bridge to St Louis from
Illinois



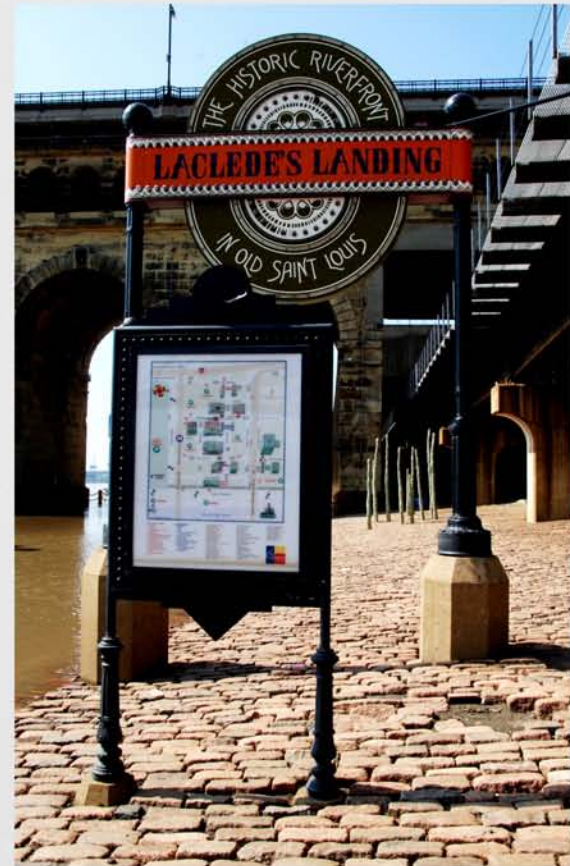
Farmland and bluffs along
the Mississippi River



End of the street
- start of the river



"Old St Louis" riverfront - flooded!



"Old St Louis" historic district

"Great River Road"
(Missouri)



"Old St Louis" historic district on the riverfront

"Great River Road"
(Missouri)



Downtown St Louis



City Hall



Riverfront
St Louis



"Gateway Arch"



"Great River Road"
(Missouri)

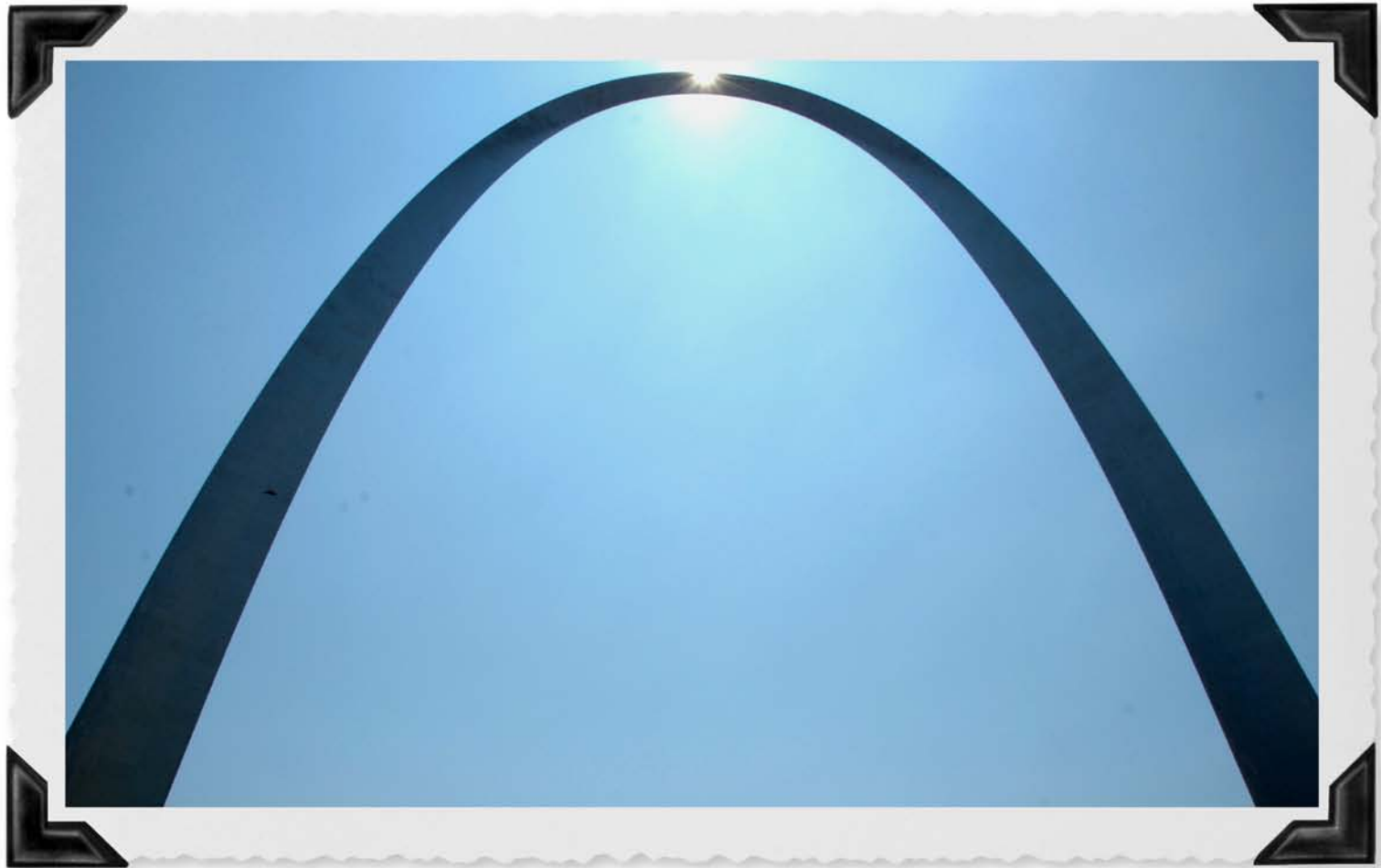


∞ "Great River Road" - (Missouri) ∞



"Great River Road"
⌘ (Missouri) ⌘

∞ "Great River Road" - (Missouri) ∞



"Gateway Arch" - St Louis



Old church and
the Arch



Gateway Arch in the reflecting pool

"Great River Road"
(Missouri)





Flooding of the Mississippi River - St Louis riverfront

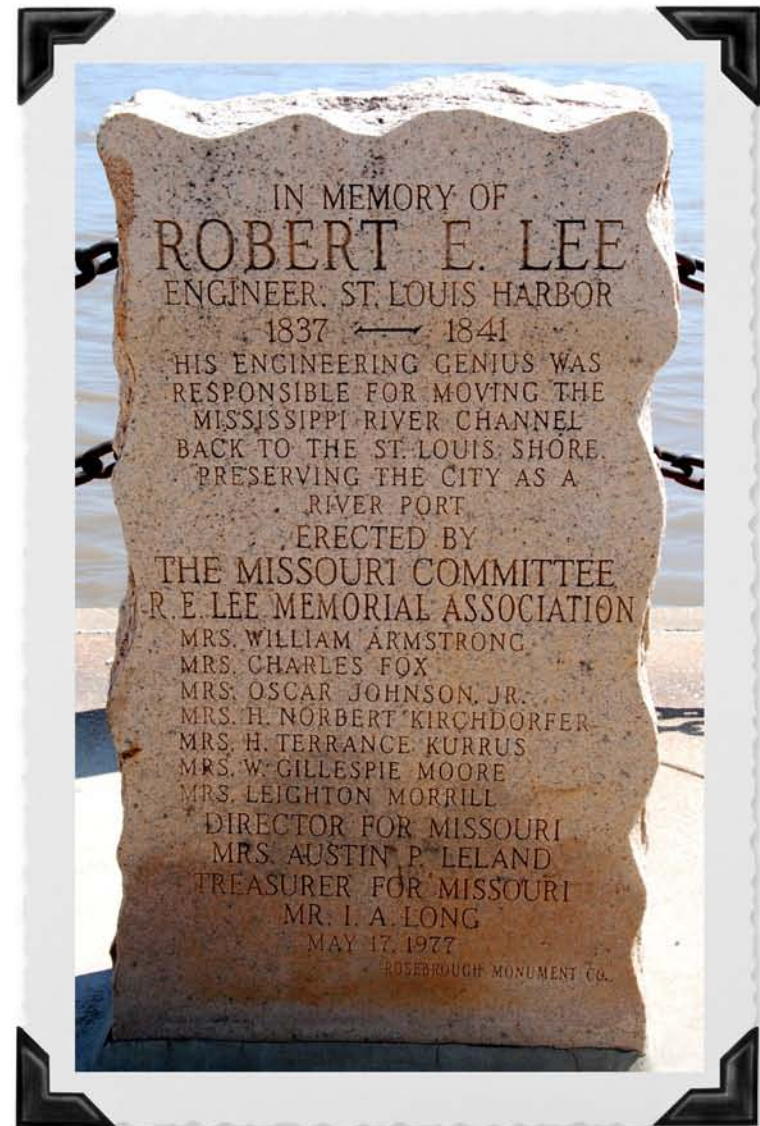
"Great River Road"
(Missouri)



Restored River Steamboat



Old St Louis



~"Great River Road" - (Missouri)~



Old Catholic Church - St Louis



Catholic Bishop's house
St Louis



Old Synagogue - St Louis

"Great River Road"
(Missouri)



Mississippi River - New Madrid



New Madrid Historical Museum (old saloon)



"Great River Road" (Missouri)



Large barge load of coal heading down river from New Madrid



Antique Dentist's Chair - New Madrid Museum

"Great River Road"
(Missouri)



Mississippi County Courthouse - Osceola

"Great River Road"
(Arkansas)

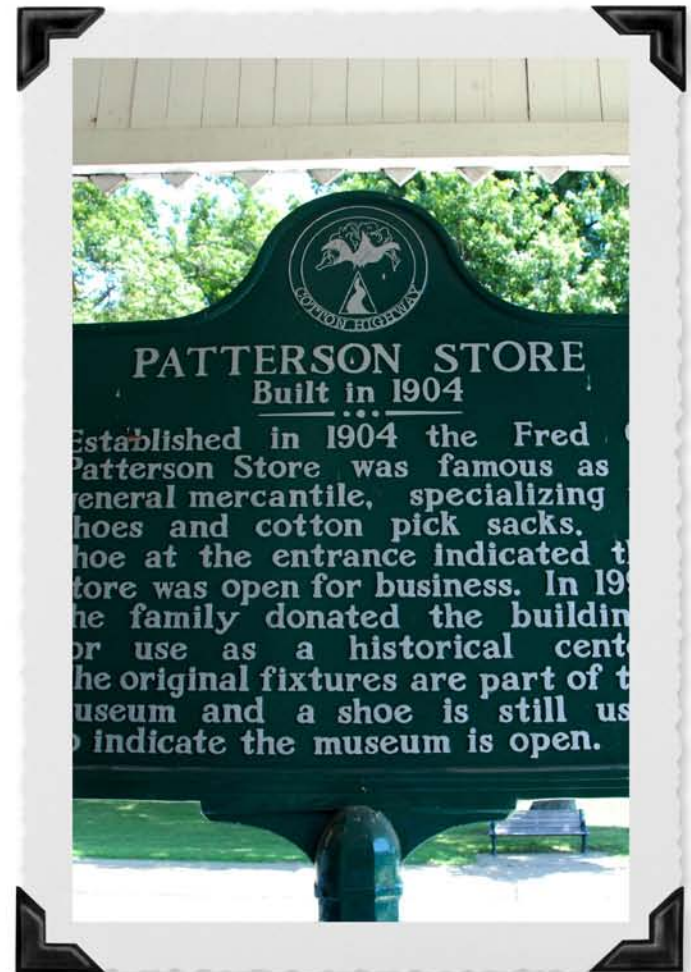


US Highway 61
(The "Blues Highway")





Famous Blues
artist of Osceola



"Great River Road"
(Arkansas)



Patterson Store, Osceola - now an historical museum



Downtown Osceola ("Home Cooking Served Daily")



Old abandoned hotel - Osceola



The levee & abandoned railroad line - Osceola

"Great River Road" (Arkansas)



Riverfront in
Helena



"King Biscuit Flower Hour" mural along the levee - Helena



Unloading truckload of rice - Helena

"Great River Road"
 ∞ (Arkansas) ∞

Battle for the Mississippi

By June, 1863, only Vicksburg remains to block complete Federal control of the Mississippi River. For a time, the Confederate forces there defend themselves on fortified bluffs that keep them out of reach of naval attack. Union troops under General U.S. Grant encircle the city, conduct a six week siege, and ultimately capture Vicksburg on July 4, 1863. Grant's victory occurs despite the Confederate attack on Union-occupied Helena, intended to divide Federal forces.

Helena remains an important port and naval base throughout the war. U.S. Navy vessels supply the town and patrol the river. Helena serves as a coal fueling station for the United States Western Flotilla. Over 50 Union ships port at Helena during the Civil War.



Goodsboats sitting out at Cincinnati, Ohio for government service on the Mississippi.
Current U.S. Steel Historical Center



"Delta Cultural Center"
museum Helena



Old Rock Island Railroad
depot - now a museum

The story of the Civil War battle to control the river

"Great River Road"
(Arkansas)



Delta Cultural Center - local Quapaw Chief circa 1824



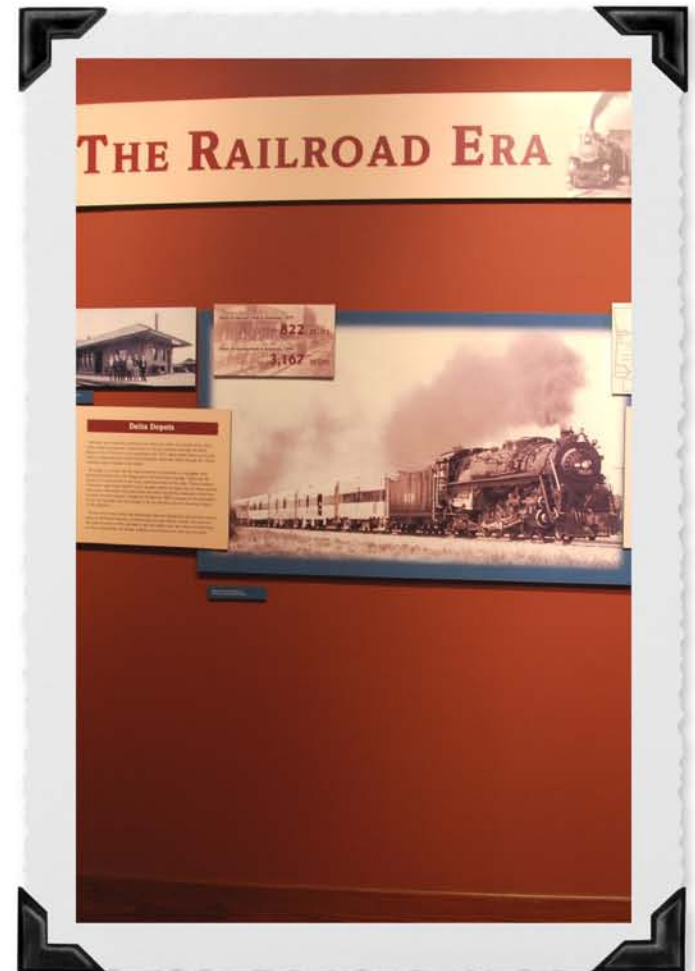
Delta Cultural Center - portrait of black Union soldier

"Great River Road" (Arkansas)

Historical exhibit about slavery in the delta



Delta Cultural Center - exhibit about the days of the River Steamboats



Delta Cultural Center - the bygone days of the railroads



Delta Cultural Center (postcard circa 1880)

"Great River Road"
 ∞ (Arkansas) ∞



Trail following the old Confederate Army trenches

"Great River Road" (Tennessee)



Display about the black
Union soldiers



Fort Pillow - Fulton

∞ "Great River Road" - (Tennessee). ∞



Fort Pillow State Historical Park museum



Mississippi River National Museum - Memphis



Jefferson Davis Park & old streetcar - Memphis



"Cobblestone Landing" -
Memphis riverfront

"Great River Road"
(Tennessee)



Storm
approaching



Jefferson Davis Park - Memphis



Skyline of downtown Memphis

"Great River Road"
∞ (Tennessee) ∞